



WE.MOVE.FUTURE

KIRCHHOFF GROUP: MOBILITY FOR PEOPLE

We move future. Over four generations, for more than 220 years, the KIRCHHOFF Group has been pursuing its goal of providing more mobility for people. People all over the world. Safe mobility for both manufacturers and users of vehicles. Individual mobility for all those faced with mobility restrictions. Innovative mobility for the operators, drivers and loaders of waste collection, road sweeping and sewer cleaning vehicles and thus freedom for mobility in a clean environment. Ergonomics for those working with a perfect grip on hand tools. Mobility and a bright future for our clients, our employees and trainees worldwide as well as for our families. My sons and myself have pledged ourselves to achieving this goal.



Dr.-Ing. Jochen F. Kirchhoff

We create mobility.

Our foremost principle is manifested in our contribution toward achieving greater safety in vehicles worldwide, in the fascination of individual cars, in a clean environment with room for mobility and in high energy transmission with our handy, non-slip tools.

We combine benefits.

Our efficiency is based on one concept: the individual combination of service packages and efficient process chains for the ultimate benefit of our clients.

We act with integrity.

The spirit of the shareholder family worldwide inspires socially competent management, being aware of the responsibility for the welfare of all employees and their families. We work with people for people.

We think in global terms.

Our leading motto “think global, act local” is documented in the continuous internationalization of the group with more than 30 production plants located directly at client centers, simultaneously centralizing development, design and marketing activities.





The family-run, innovative group of companies with a wealth of tradition stands for close communication and great experience within its fields of core competence. Worldwide almost 4000 employees in over 30 production plants and 100 service locations perform their daily tasks with great enthusiasm. The human cooperation and the fascination of being able to move and change the future is a common bond. The group motto "WE.MOVE.FUTURE" only works because the "WE" exists. What WE can move is the competitiveness of our customers, the future of our employees and the profitability of our company group - and only through the joint efforts of all employees together. In the various business divisions of the KIRCHHOFF Group, the WE is of greatest importance. Our employees, more than seven percent of whom are trainees, live this feeling worldwide.





 KIRCHHOFF Automotive Attendorn, Iserlohn	 REHA Group Automotive Hilden	 FAUN Umwelttechnik Osterholz-Scharmbeck	 WITTE Werkzeuge Hagen
--	--	---	---

-  KIRCHHOFF Automotive Deutschland Attendorn, Olpe
-  KIRCHHOFF Automotive Deutschland Iserlohn
-  KIRCHHOFF Automotive Deutschland Günthersleben
-  KIRCHHOFF Automotive Deutschland Saarwellingen
-  KIRCHHOFF China Shanghai
-  KIRCHHOFF España Figueruelas (Zaragoza)
-  KIRCHHOFF France Ymeray (Chartres)
-  KIRCHHOFF Hungária Esztergom
-  KIRCHHOFF Ireland Letterkenny
-  KIRCHHOFF Mexicana Puebla
-  KIRCHHOFF Polska Mielec, Gliwice I & II
-  KIRCHHOFF Portugal Ovar, Cucujães (Porto)
-  JOINT VENTURE VIA Olpe
-  JOINT VENTURE VRK Querétaro

-  REHA Group Automotive Hilden
-  REHA Group Automotive Schlitz
-  REHA Group Automotive Hamburg
-  REHA Group Automotive München
-  REHA Group Automotive Berlin
-  Grupa REHA Polska Skarzysko

-  FAUN Umwelttechnik Osterholz-Scharmbeck
-  FAUN Viatec Grimma
-  FAUN Brüssel
-  FAUN Elbeco Jablonec nad Nisou
-  FAUN Medioambiental Ibérica Barcelona
-  FAUN Guilhaud-Granges, Toulouse
-  FAUN Municipal Vehides Llangefni
-  J. Ochsner Urdorf (Zürich)

-  WITTE Werkzeuge Hagen
-  JOINT VENTURE WITTE-Urrea El Salto (Guadalajara)



OBJECTIVES THAT ARE WORTHWHILE

WHAT WE ARE STRIVING FOR:

<<< 1. The satisfaction of our customers in terms of quality, costs and service.



www.kirchhoff-automotive.de



www.reha.com



www.faun.com



www.witte-werkzeuge.de

2. Healthy, satisfied and qualified employees.

3. To maintain and increase our competitiveness with sustained profitability.

4. Innovative products, technologies and processes.

5. Economical and environmentally friendly use of resources.





KIRCHHOFF AUTOMOTIVE

TECHNOLOGY THAT GOES UNDER THE SKIN

FROM A SINGLE PART TO A COMPLETE CHASSIS. Ever since cars have existed we have been producing and supplying metal parts, and for the vehicles of today, hybrid structures for the automotive industry. The single-part manufacturer has become an internationally recognized developer and supplier of modules and chassis structures. KIRCHHOFF Automotive provides vehicles worldwide with additional stability and safety. But we also offer our customers a great deal more than that – we supply them with a vital contribution toward becoming more competitive. The crucial cost and logistical advantages of our lean, medium-sized company structure with international presence are all designed to serve one single purpose – to promote the market success of our customers – thus securing our innovative strength and profitability. This is our pledge worldwide.

Thought determines our actions, strategy our future, profitability our innovative strength and the ability to react our daily business. As a partner to the automotive industry, we develop complete modules and chassis structures for our customers. Centrally designed and internationally manufactured, we produce

Performances that inspire you.

You will soon notice the difference. The people at KIRCHHOFF Automotive know what to do and how to read between the lines. We listen closely and understand more than just words. We recognize the needs of our common markets and motivate our employees worldwide to achieve top performance. At KIRCHHOFF Automotive you will find

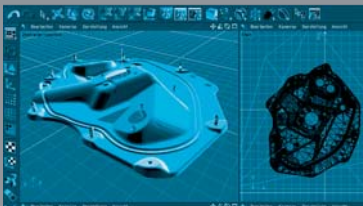
People who understand.

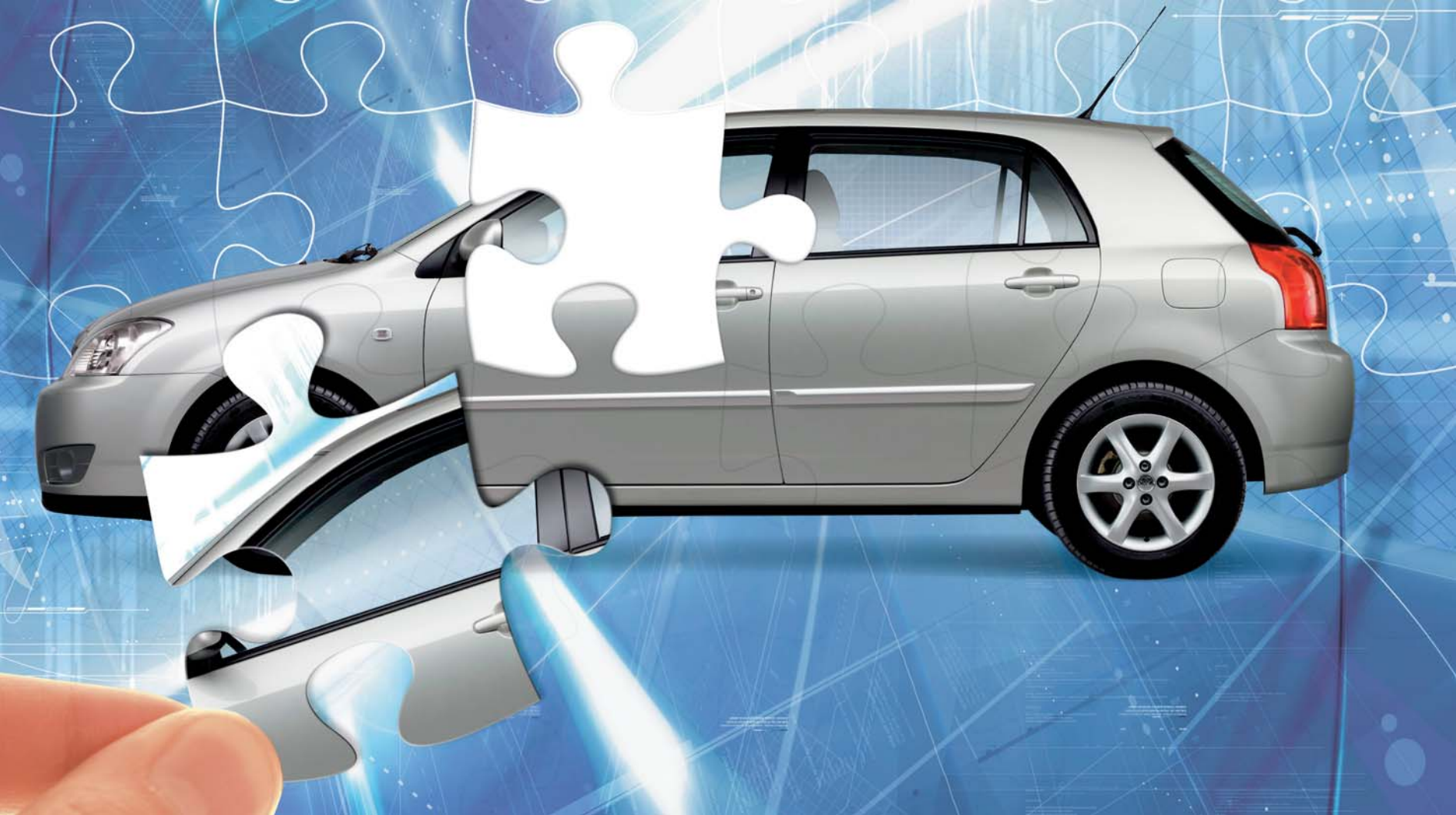
Action fulfils our strategies in accordance with our customers' objectives. As a flexible, medium-sized corporation we act quickly, invest to ensure the profitability of our customers and live the words we write. KIRCHHOFF Automotive makes it happen. With three core technologies, our employees design daily customer benefits and produce, from metal and other materials, complex

Modules that move.

With the centralized sales and development center in Germany, the 16 decentralized production plants worldwide and the core technologies of forming, assembling and surface treating – applied either individually or in combination – our international process chain achieves optimal cost and logistical advantages, sustaining close customer contact throughout all project phases. We create

Projects that mobilize.





REHA GROUP AUTOMOTIVE

MOBILITY THAT FASCINATES

THE FASCINATION OF INDIVIDUAL MOBILITY. For the last quarter of a century, the brand name REHA has been synonymous with the production of cars made to measure. With a simple promise - "We make 'almost' any automobile". Today, REHA Group Automotive has become a comprehensive supplier all over Germany in this segment. Customer proximity is one of the company's strong points. Every domestic customer is within 200 km of one of the present six REHA Group locations in Germany and this network is continually being extended. The branch in Poland is the first one founded outside Germany. Ever since the REHA Group joined the internationally operating KIRCHHOFF Group, even more future can be moved. With the support of KIRCHHOFF Automotive, this rapidly expanding brand will continue to grow.

Individuality based on requirements.

We do not offer our customers a pre-fabricated product range. Each customer is treated individually. Wishes, requirements and technical possibilities are noted and coordinated by consultants who themselves belong to the target group. This guarantees a personal and perfectly tuned vehicle solution. This permits persons with a muscle performance of just five percent to be mobile.

Offers that are developed with precision and transparency.

REHA Group Automotive and its employees compile a precise and transparent offer for each inquiry, presenting ideas in words and technology in figures. In a period of usually fewer than 20 working days tailor made and, if necessary, officially test-certified modifications are carried out by specialists.

Market perspectives with a future.

REHA designs both active and passive driving controls as well as boarding and loading facilities for unimpeded mobility and pleasure in driving. REHA is already prepared for the demographic changes in social structure that are expected. We develop products and services for the 'young' senior market, which permit active participation in social life.

Partners who produce premium solutions together.

Many well-known car manufacturers rely on the competence of REHA Group Automotive. We are exclusive equipment suppliers to large OEMs and develop solutions for disabled drivers together with famous brand names. Car manufacturers worldwide are highly satisfied with the competent solutions from REHA and offer these to their customers with conviction.





FAUN GROUP

STABILITY THAT LASTS LONGER

WHEN GROWTH LEAVES NO TRACES. FAUN is the synonym for durable waste collection vehicles, for sweepers that economically clean streets and public areas, and for perfectly designed stable vehicles and equipment that care for and maintain sewer networks. More than 160 years of accumulated company tradition is the story of continual technical innovation with the highest possible degree of reliability. During this time, the company has introduced significant changes to the world of communal waste disposal. FAUN's technical progress has led to a creditable rise in the level of environmental protection and vast improvements in hygiene standards. Both our customers and our employees have taken responsibility for tomorrow's world and in doing so made us market leader in Europe. We supply our customers with the entire range of waste collection, wet cleaning and sweeping vehicles including all related services, all from one provider.

Individual solutions in fully industrialized, economic production.

FAUN waste disposal vehicles are as varied as the range of tasks they are faced with daily at their operational locations. At six internationally situated centers, FAUN configures vehicles individually to match various customer requirements – at optimal cost and manufactured within industrial production structures. This combination of made-to-measure production and the high quality of the materials selected guarantees reliable vehicles with long operational lives.

Constant innovation that leads to low logistics unit costs.

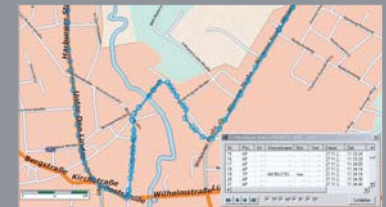
Through single-minded research and a very high level of investment we fulfill the requirements on quality, reliability and innovation in cooperation with our customers. The high-performance loading systems with innovative operating units and the above-average resale value due to the robust construction make FAUN vehicles more economical in real terms.

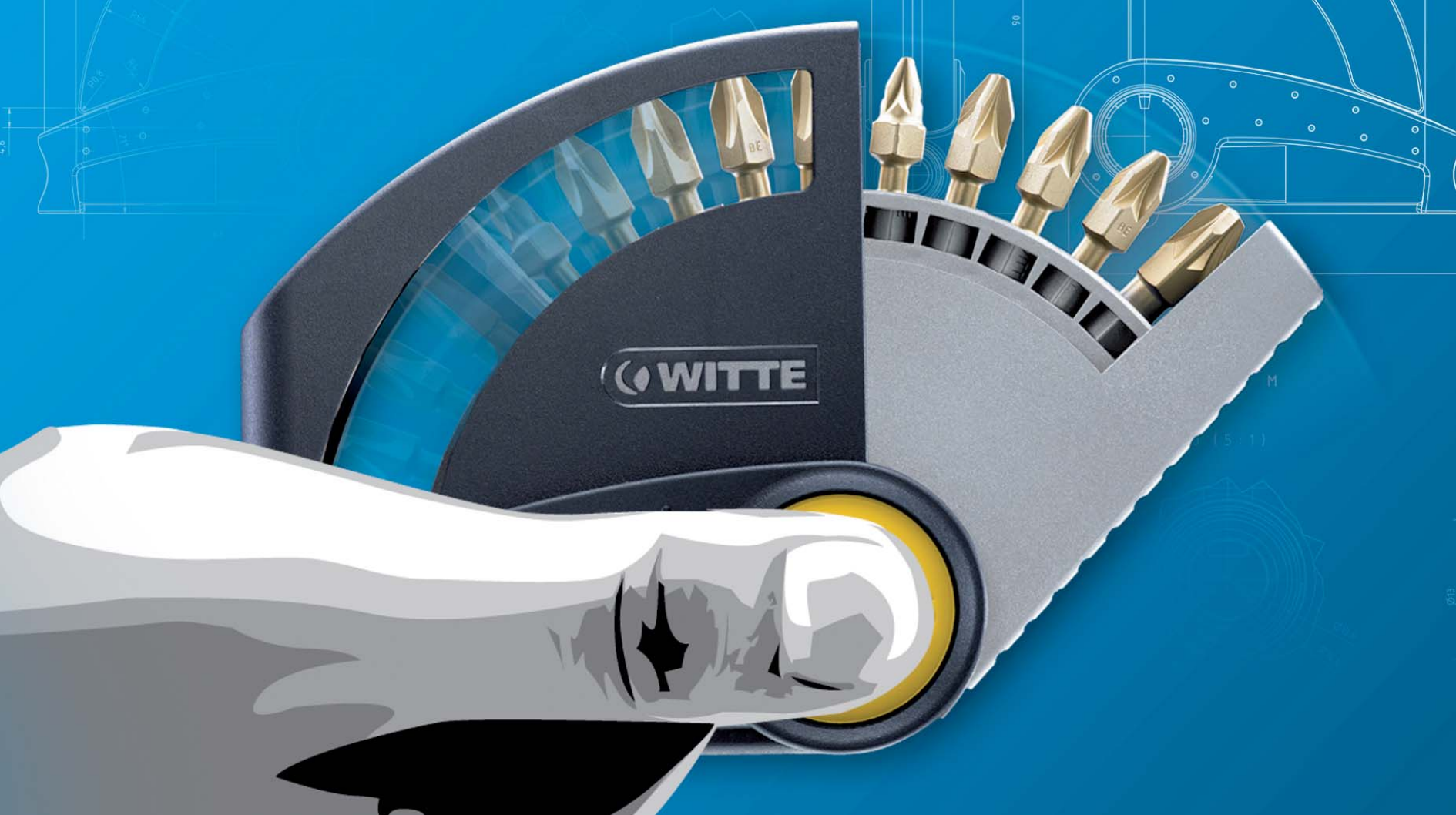
Comprehensive availability, consultation and service.

A comprehensive European network of over 75 service points provides easy access to all FAUN services. The 500 well-trained service specialists worldwide are in the immediate vicinity of the customers, know exactly what to do and provide ideal vehicle care and maintenance. FAUN vehicles have been highly regarded over decades for retaining their value, their high availability rate and their economical operation.

Depth and quality of service assure market leadership.

FAUN has become much more than just a manufacturer of robust communal vehicles. Its own service departments and subsidiaries guarantee a high degree of service quality and after-sales service. Whether financing or leasing, renting, logistical consultation, tour navigation or weighing systems, FAUN supplies you with a lot more than just stable vehicles.





WITTE WERKZEUGE

PERFECTION WITH A GRIP

WHEN FUNCTION AND EFFECT ARE IN HARMONY. WITTE is one of the leading manufacturers of assembly tools for screws and nuts. The company has been active for the last 220 years, but the ergonomic design of the handle elements is the typical successful feature that has woven its way through the fabric of our recent history. As one of the first manufacturers worldwide, at a very early stage we began cooperating with designers and ergonomics faculties to develop innovations in both shape and materials. This has made WITTE one of the foremost manufacturers in Europe. We intend to maintain and increase this high reputation, both at home and abroad.

Ergonomics that set standards.

Through constant innovation, the trade name WITTE has achieved a great deal of prestige among our worldwide partners whether craftsmen, businesspeople or in industry. A team of designers and technicians is responsible for a range of assembly tools for screws and nuts capable of meeting the most stringent requirements and facilitates manual work to a high degree.

Partnership with added value.

We support our customers in every possible way. As a qualified and recognized partner in development we produce high quality private brands within Germany as a supplier to large brand-name manufacturers on the tool market. We support our industrial customers with engineering, product and packaging design as well as through sales promotion. WITTE is actively engaged with business partners on all continents right across the world.

Materials with a comfortable grip.

The grip or handle of a tool as the interface between craftsman and the tool itself is the central theme in our activity. Our research and development work involves not only the shape of the entire tool but also new material combinations. Our worldwide patent on microfibre coating for the WITTE model range MAXXPRO PLUS is an excellent example of innovation in this field.

Specialization that produces quality.

The WITTE specialty is its core sphere of competence - the field of assembly tools for screws and nuts. Contrary to many all-round suppliers, we concentrate purely on various ranges of screwdrivers, bits and bit boxes – naturally for all types of application and with all of the necessary sales promotion elements from individual and set packaging and counter dispensers to palette displays. Our market orientation is definitely a global one.





KIRCHHOFF Group

Stefanstraße 2
D-58638 Iserlohn
GERMANY

Telephone: +49 2371 820-0

Fax: +49 2371 820-222

Email: info@kirchhoff-gruppe.de

www.kirchhoff-gruppe.de

KIRCHHOFF Automotive Deutschland GmbH

Am Eckenbach 10-14

D-57439 Attendorn

GERMANY

Telephone: +49 2722 696-0

Fax: +49 2722 696-219

Email: automotive@kirchhoff-gruppe.de

www.kirchhoff-automotive.de

REHA Group Automotive GmbH & Co. KG

Kleinhülsen 41

D-40721 Hilden

GERMANY

Telephone: +49 2103 5876-0

Fax: +49 2103 5876-99

Email: info@reha.com

www.reha.com

FAUN Umwelttechnik GmbH & Co. KG

Feldhorst 4

D-27711 Osterholz-Scharmbeck

GERMANY

Telephone: +49 4795 955-0

Fax: +49 4795 955-200

Email: info@FAUN.com

www.FAUN.com

WITTE Werkzeuge

Feldmühlenstraße 51

D-58093 Hagen-Fley

GERMANY

Telephone: +49 2331 3607-0

Fax: +49 2331 3607-24

Email: info@witte-werkzeuge.de

www.witte-werkzeuge.de